

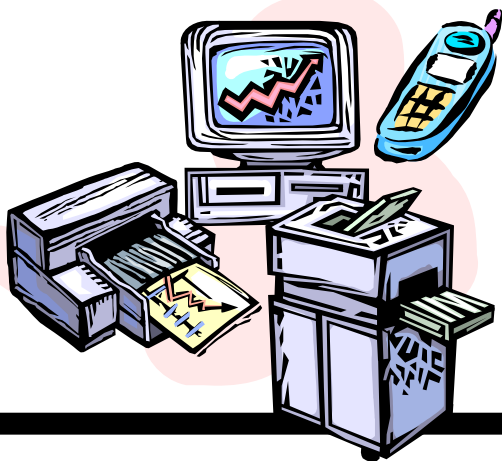
# e-waste

## What is it?

As we become more dependent on electronic products to make life more convenient, the stockpile of used obsolete products grows.

Computer monitors and older TV picture tubes contain an average of four pounds of lead and require special handling at the end of their lives. In addition to lead, electronics can contain chromium, cadmium, mercury, beryllium, nickel, zinc and bromated flame retardants. When electronics are not disposed of or recycled properly, these toxic materials can present problems. Extending the life of your electronics or donating your most up-to-date and working electronics can save you money and saves valuable resources.

Safely recycling outdated electronics can promote the safe management of hazardous components and supports the recovery and reuse of valuable materials.



# e-erase your e-waste!

The Delta Household Hazardous Waste Collection Facility is located at the

**Delta Diablo Sanitation District**  
**2550 Pittsburg Antioch Highway**  
**Antioch, California 94509-1373**  
**925-756-1990 – [www.ddsd.org](http://www.ddsd.org)**

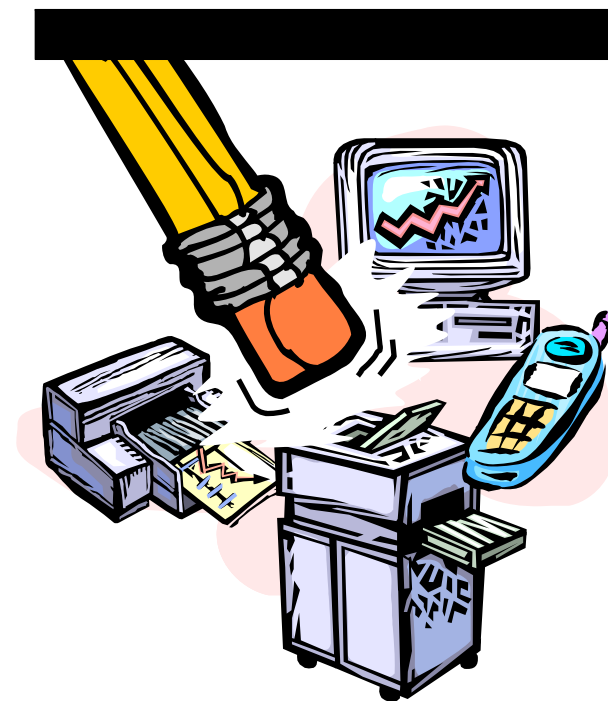
Open to residents and small businesses in Eastern Contra Costa County:

Antioch, Bay Point, Bethel Island, Brentwood, Byron, Discovery Bay, Knightsen, Oakley and Pittsburg



Printed by Delta Diablo Sanitation District  
2500 Pittsburg Antioch Highway, Antioch CA 94509-1373  
The artwork for this brochure was developed by USDA-ARS in Sidney, MT. Printed on Recycled Paper

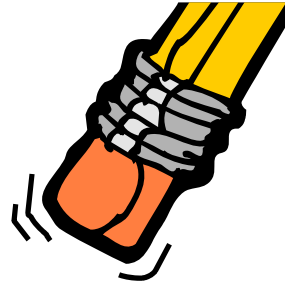
Rev 04/11



# e-erase your e-waste!

*Information on  
safe recycling of  
electronic waste  
for East Contra  
Costa County  
small businesses  
and residents*

# e-cycle!



e-rase your e-waste...

*At the Delta Household Hazardous Waste Collection Facility in Antioch*

e-waste is a popular, informal name for electronic products nearing the end of their “useful life.” Computers, televisions, VCRs, stereos, copiers, mobile phones and fax machines are common electronic products that make up one of the fastest growing segments of our nation’s waste

Because of the heavy metals and other toxic substances contained in many electronic products, California and some other states have begun to regulate their disposal in public landfills. It may not be too much longer before federal rules are developed that will require everyone to e-cycle.

To encourage and help our residents comply with the new laws about e-waste, the Delta Household Hazardous Waste Collection Facility has added e-waste to the hazardous items now being accepted for recycling and safe disposal.

e-rase your e-waste at the Delta Household Hazardous Waste Collection Facility.

## Accepted Electronic Waste

Televisions/Computer Monitors  
Tape, Zip, and Optical Drives  
Microwaves (not other appliances)  
Computers (CPU)/Laptops  
Power Supplies\*  
VCR/DVD Players  
Keyboards/mice/printers/hard drives  
Radios/Stereo Equipment  
Satellite Dish-Receiver  
PC boards/loose PCBAs  
Paper Shredders  
Oscilloscopes  
Fax machines  
Telephones/Cell Phones\*  
Electronic Lab Equipment (No Radioactive)

\*Please remove batteries and bring separately

# e-cycling

## *What can I bring?*

“E-Waste” refers to a wide range of electronic products. Examples include: computers and their components, cell phones, TVs, fax machines, copiers, VCRs, DVD players, stereos and specialized electronic equipment used in businesses. Even microwaves are acceptable, although not other appliances.

## *What else can I bring?*

In addition to E-waste, the DHHWCF accepts paints, pesticides, motor oil, antifreeze, batteries, pool chemicals, household cleaners, old medicines, solvents, stains, fluorescent lamps, and chemicals typically found in the home. There is no charge to residents for disposal of these items and a minimal charge for small businesses. Visit [www.ddsd.org](http://www.ddsd.org) for a full list.

## *What will it cost?*

Nothing! This is a free service for East County residents and small businesses. Sponsoring agencies are: Delta Diablo Sanitation District, City of Pittsburg, City of Antioch, City of Brentwood, Ironhouse Sanitary District, and Contra Costa County.

## *When should I bring it?*

The Delta Household Hazardous Waste Collection Facility is open every Thursday, Friday and Saturday, except holidays, from 9:00 a.m. to 4:00 p.m. Call 925-756-1990 or visit [www.ddsd.org](http://www.ddsd.org) for more details. If you are a small business please make an appointment (925-756-1990) and visit our website for information about our Small Business Program.